

# Stratham Skatepark Project

## Cost of Project: Tax Impact

- \$325,000 project but asking Stratham residents for \$300,00 (the rest is made up by donations/ discounts of materials, labor donations and fundraising efforts.)
- .25 cents per thousand
- On a \$400,00 home this would be a \$100 one time expense.

## Cost of Construction Breakdown

Demolition (clearing and grubbing)	\$6400
Earthwork (cut and fill on-site)	\$25,600
Storm Drainage (Drain line/discharge/floor drain)	\$14,900
Cast in place concrete (Top deck/sidewalk/ledge/wall)	\$92,930
Shotcrete (banks and bowls)	\$75,600
Steel (round pipe/square tube/steel rails)	\$24,455

\*Dollar figures include labor & cost of material

\*These are probable construction costs

Overall cost for skatepark construction \$239,885

Mobilization and general conditions (15% of estimate) \$35,982.75

*This charge includes lodging, food per diem, and transportation of workers and equipment.*

Pillar Design fee (10% of estimate) \$23,988.50

**Total cost to town \$299,856.25**

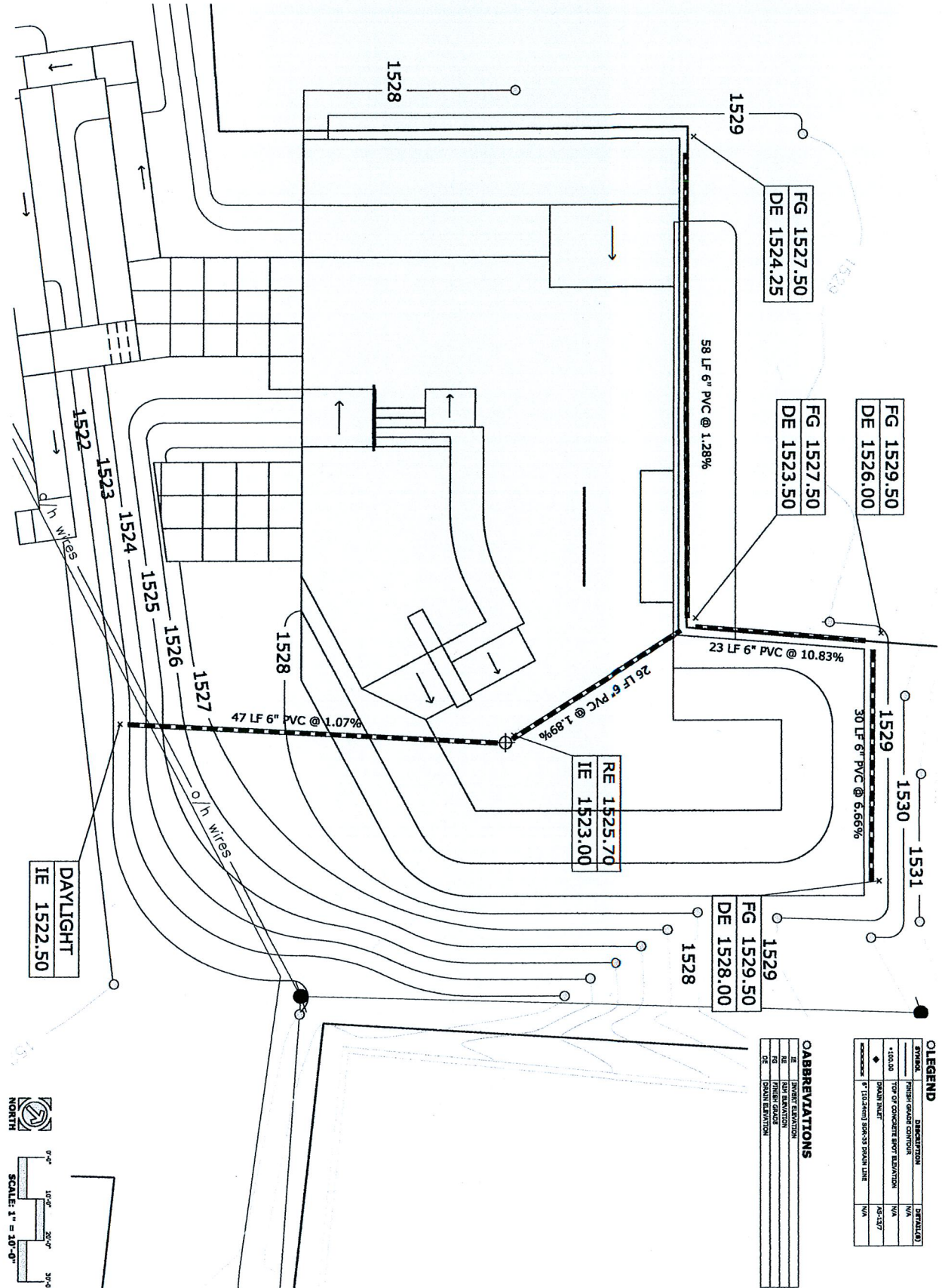
Including Artisan skateparks & Pillar Design

(beautification not included as this will be raised via fundraising)

## Cost Savings

- Highway department (use of equipment and excavation costs)
- Exeter Lumber: materials at cost and donation of warehouse seconds
- Concrete: municipal discount

**Beautification donations** include labor and discounts from *Fat Cod*, labor and discount from *Stratham Circle Nursery*, \$3000 and volunteer labor from *Liberty Mutual*, volunteer labor from *Timberland*, \$2000 from *Converse* and the sale of bricks and benches.



**LEGEND**

SYMBOL	DESCRIPTION	DETAILS
	FINISH GRADE ELEVATION	N/A
	TOP OF CONCRETE CURB ELEVATION	N/A
	DRAIN INLET	AC-137
	15.24" (15.24) 500-33 DRAIN LINE	N/A

**ABBREVIATIONS**

SYMBOL	DESCRIPTION
FG	FINISH GRADE ELEVATION
RE	REINFORCEMENT ELEVATION
IE	INLET ELEVATION
DE	DOWN SLOPE ELEVATION



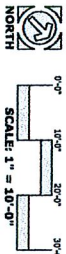
SHEET: 05 OF 13  
**AS-05**  
 SKATE PARK

PROJECT: **SARANAC LAKE SKATE PARK**  
 SARANAC LAKE, NEW YORK  
 SHEET TITLE: SUB SURFACE DRAINAGE PLAN

DESIGNED: PILLAR  
 DRAWN: PILLAR TEAM  
 PROJECT #: 12-007  
 DATE: 07/01/14

THE USE OF THESE PLANS SHALL BE RESTRICTED TO THE ORIGINAL SITE FOR WHICH THEY WERE PREPARED AND NO REUSE, REPRODUCTION, PUBLICATION OR SALE OF THESE PLANS OR CONCEPTS IN ANY MANNER, IN WHOLE OR PART WITHOUT THE WRITTEN CONSENT OF PILLAR DESIGN STUDIOS, LLC IS PROHIBITED. TITLE TO THESE PLANS AND CONCEPTS REMAINS WITH PILLAR DESIGN STUDIOS, LLC WITHOUT RESERVE. VISUAL CONTACT WITH THE PLANS SHALL CONSTITUTE PRIMA FACIE EVIDENCE OF THE VIOLATION OF THESE RESTRICTIVE COVENANTS. © 2014 PILLAR DESIGN STUDIOS, LLC.

**Pillar**  
 Design Studios  
 3501 N. SOUTHPORT AVENUE  
 CHICAGO, IL 60657  
 (773) 800-8112  
 www.pillardesignstudios.com



3501 N. SOUTHPORT AVENUE  
CHICAGO, IL 60657  
[t] 888.800.5112  
[www.pillardesignstudios.com](http://www.pillardesignstudios.com)



0'-0" 10'-0" 20'-0" 30'-0" 40'-0"

SCALE: 1" = 10'-0"