

ABOVE... Rambling, twin-chimney Colonial in Stratham is the home of Mr. and Mrs. John Flynn and family

AT LEFT... Favorite family gathering place for the Flynns during the summer is the backyard pool

—Photography by George Naum

## Rambling Colonial Is Home of the John Flynn Family

By JUDY CONWAY

STRATHAM — Faced with a brand new, 11-room house to decorate, there are few women who could do it with such flair and warmth as Mrs. John Flynn.

So impressed with the craftsmanship of earlier eras were the Flynns that they not only chose such a style... a rambling twin-chimney colonial... for their home but sought to repeat such features as seven-layer deep dentil molding in the living room and library, hand hewn beams for both ceilings and walls, hand pegged wide board floors, and brick fireplaces. Even the outside brick walks, in a herringbone pattern, are copies of early designs.

A compromise of preferences — Mrs. Flynn wanted a primitive Early American decor and Mr. Flynn did not — the house spans atmospheres from the very formal to the most casual.

In the foyer for instance, the mood is set by the white raised panel wainscoting, soft copper carpeting and gold and white wallpaper. The gracefully designed chandelier is of brass and the carved stairway railing, accented with deep mahogany, curves to form a balcony effect on the second floor hallway.

The copper carpeting and

the railing are repeated for the sunken living room. A full wall of white raised paneling and cabinets encompasses the black marble fireplace, the dentil work of the ceiling repeated in the mantel, and continues as wainscoting combined with more gold and white wallpaper for the remaining walls. Queen Anne is the influence in the furniture which includes an assortment of small accent tables, a floral print sofa, a pair of off-white loveseats and two blue wingback armchairs. The deep copper draperies and white sheers are topped with cornices of the same print as the sofa.

The library also has raised paneling in a natural pine finish, on one of its walls and matching wainscoting and Colonial street scene wallpaper on the remaining. With a wall of shelves and cabinets and the dark, masculine furniture, it's the perfect office for Mr. Flynn.

An entirely different air, with an English influence, is protected in the formal dining room. Heavy handhewn beams and braces trim the open entrance wall, giving a tavern effect to the room. More beams are used on the ceiling and remaining walls which feature vertical floral print wallpaper on the upper halves and yellow on the lower halves. There is also a window seat made from a single pine plank. The trestle table, hutch and serving cart are pine and the ladderback chairs, stenciled. Brass is again used for the chandelier and the handmade lanterns.

The maple stained pine woodwork, cabinets and beamed ceilings continue the country mood in the kitchen and family room, divided by a double faced brick fireplace wall, framed with the handhewn beams. In the kitchen fireplace there is a barbecue pit and wood storage area and an assortment of old cooking utensils, while the family room fireplace is equipped with bake oven and wood storage section.

Maple countertops, red print wallpaper, tablecloth and trim on the off-white curtains and an assortment of pottery, china and copper enhance the livability of the kitchen.

Add a built-in bar area, using a single pine plank for the bar, another built-in section containing shelves, cabinets, drawers and the television and more Colonial-style furnishings to family room

and it's the ideal place for family activities and entertaining.

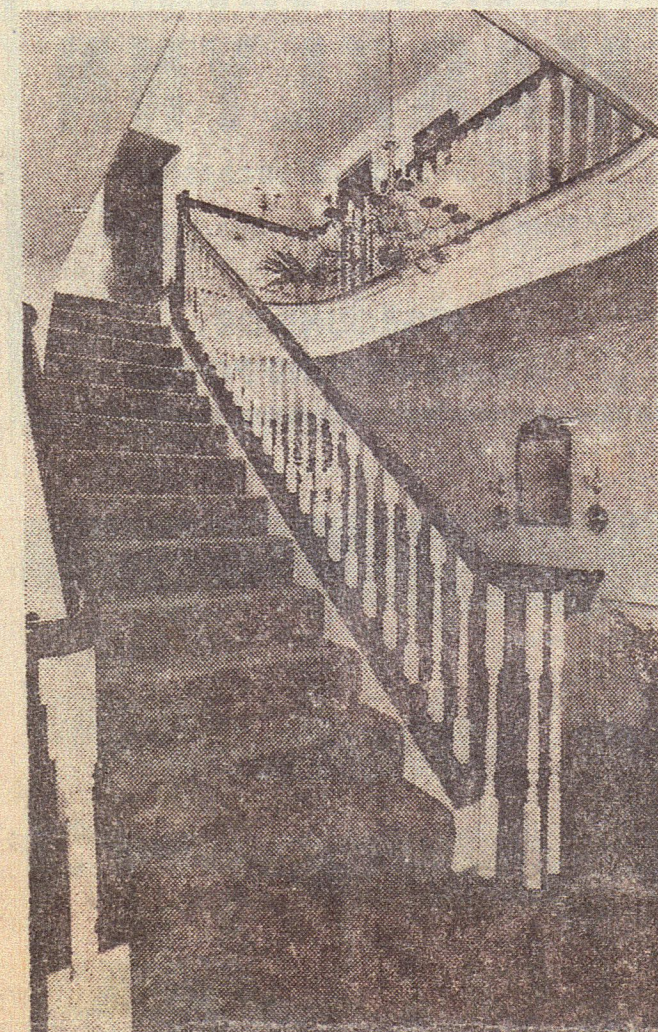
For the more athletic there is the game room, its high cathedral ceilings of handhewn beams with matching braces. A billiard table, ping

pong table, wideboard pine floors and wainscoting and harbor print wallpaper and curtains keep the mood casual.

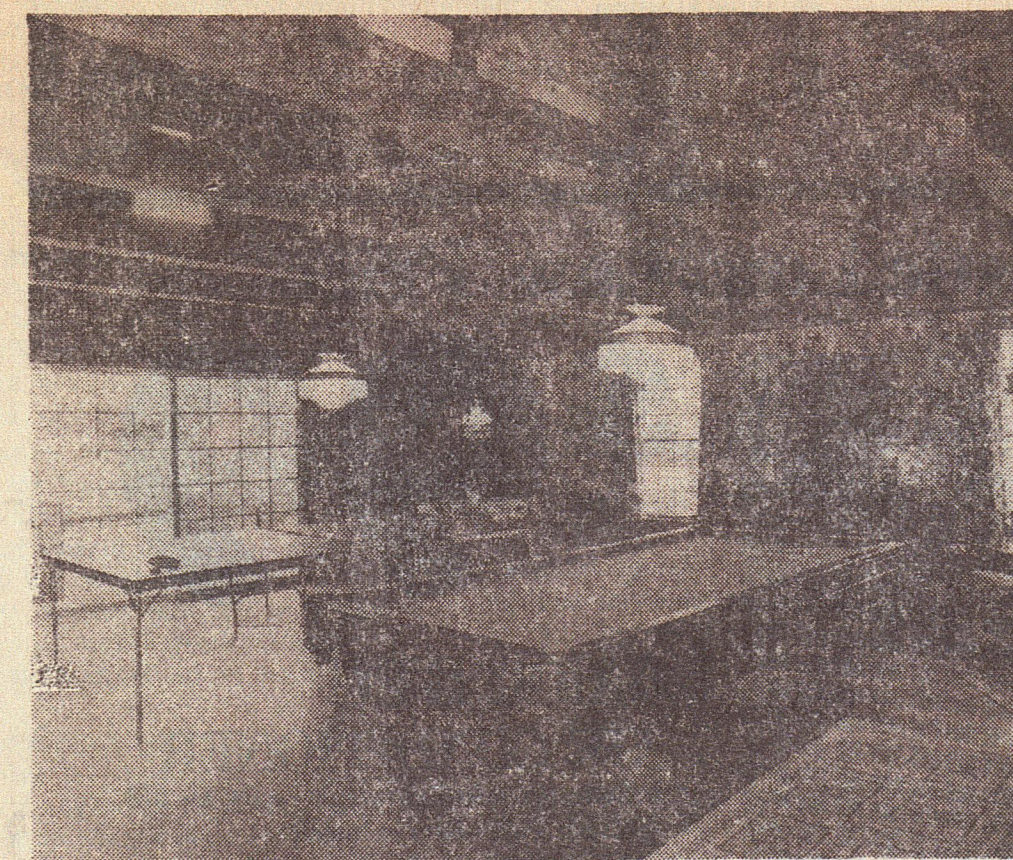
Each of the five bedrooms, including the bedrooms of the four Flynn children, is as

individual in its decor as any of the rooms. For example, the master bedroom features soft pink carpeting, floral wallpaper, draperies and bedspread in pink, blue, green and yellow on white and white woodwork and wainscoting...

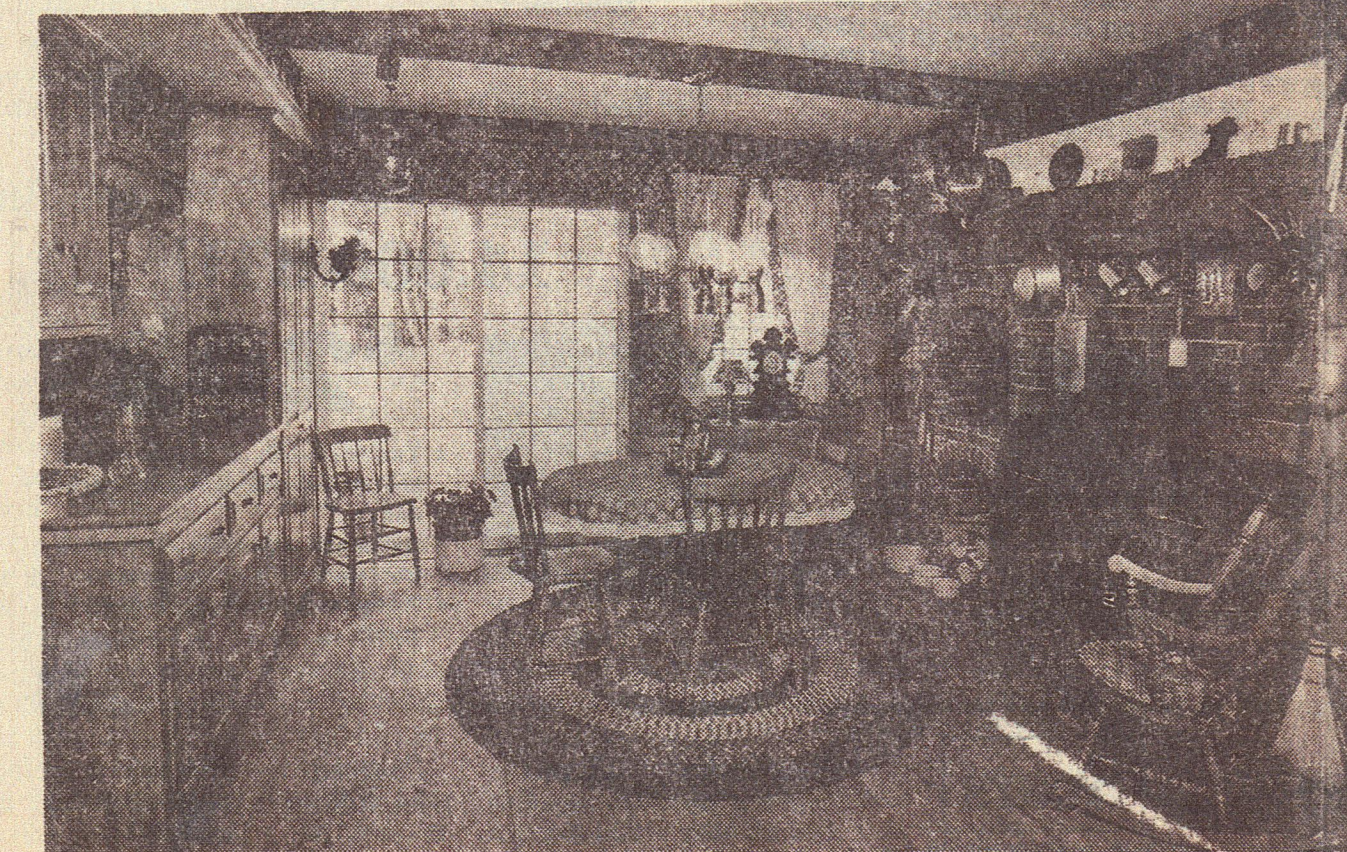
all contrasted with dark pine furniture. As difficult as it may seem, should the Flynns ever tire of their home, they can always take a break at the pool, the perfect topping for such a house.



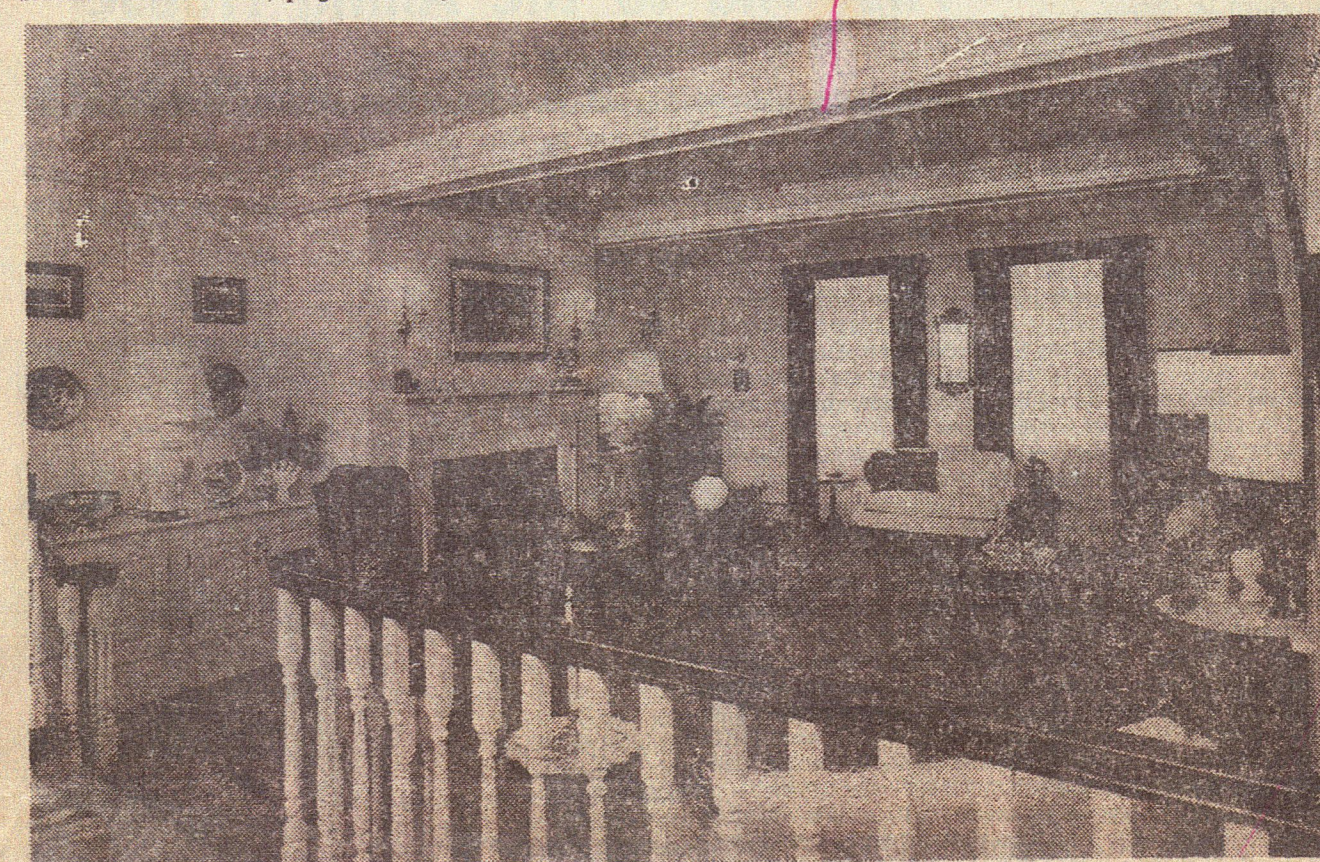
IN FOYER... Stairway curves to bedrooms



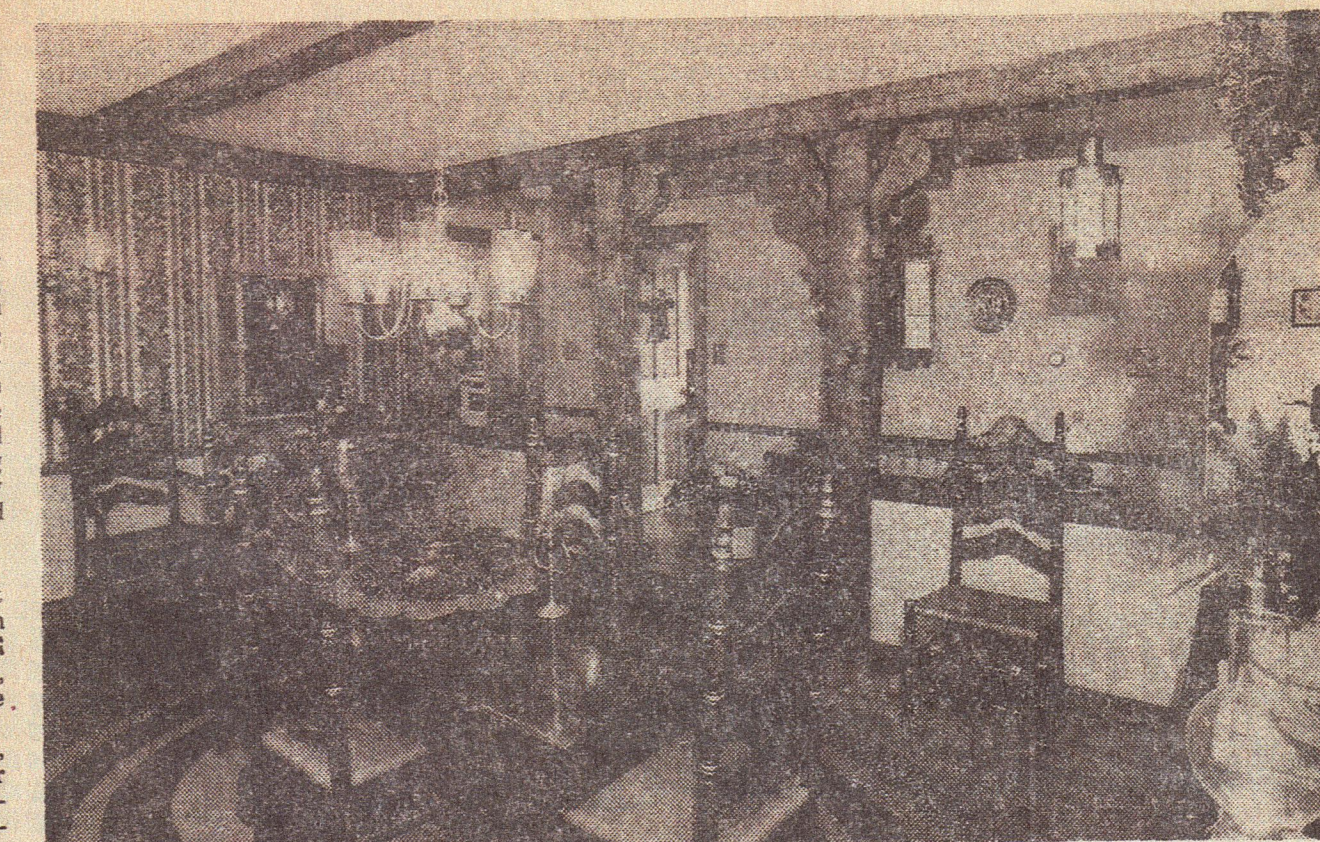
SPACIOUS... Game room features beamed cathedral ceiling



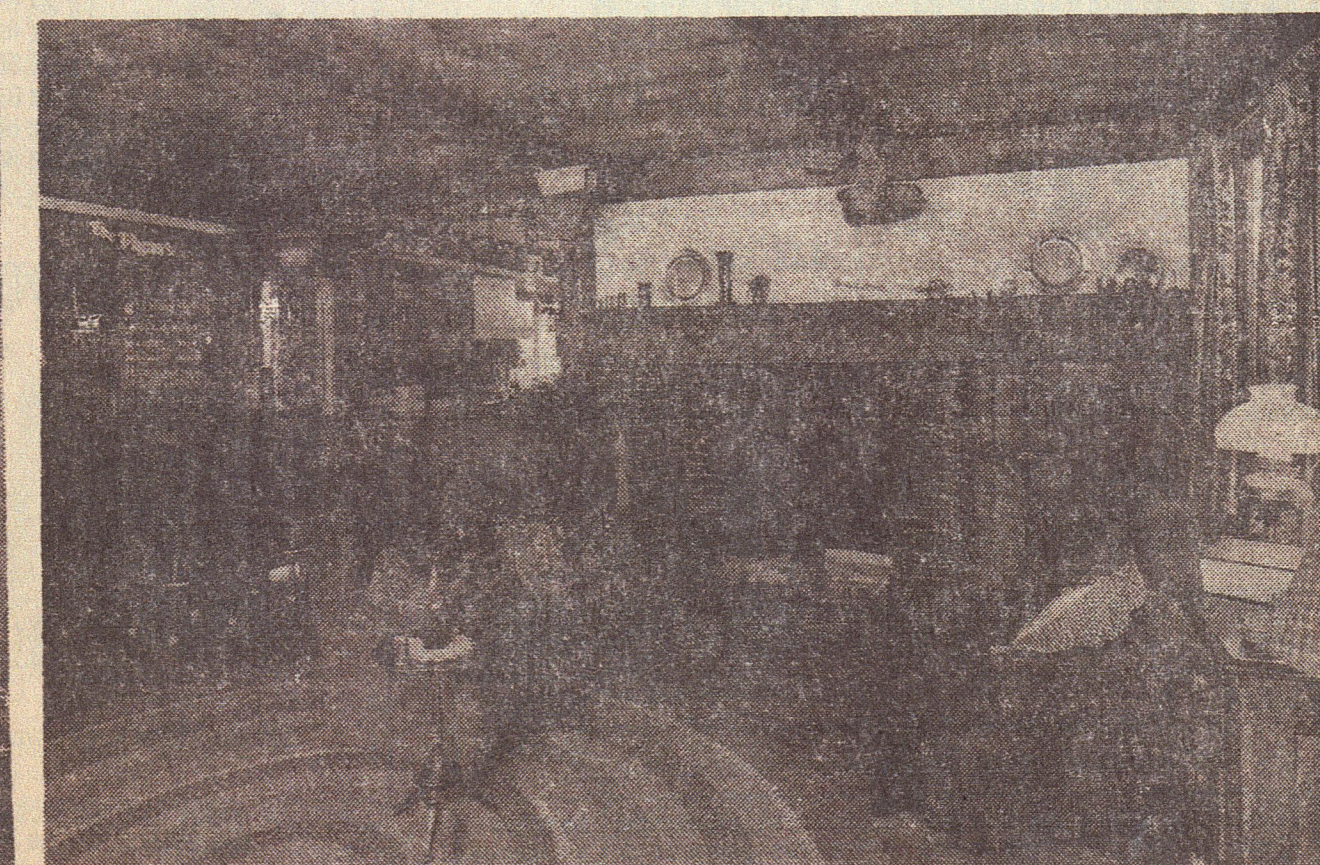
EFFICIENT, COZY... Kitchen is designed for easy care and warm, comfortable mood



FORMAL MOOD... White raised paneling lends elegant touch to the living room



TAVERN EFFECT... Hand hewn beams accent Colonial decor of formal dining room



FAMILY ROOM... Brick fireplace with bake oven, wood storage is focal point